

Egg Harbor City

Atlantic County, NJ

USGS Topographic Map

HUC-14 Watershed Area

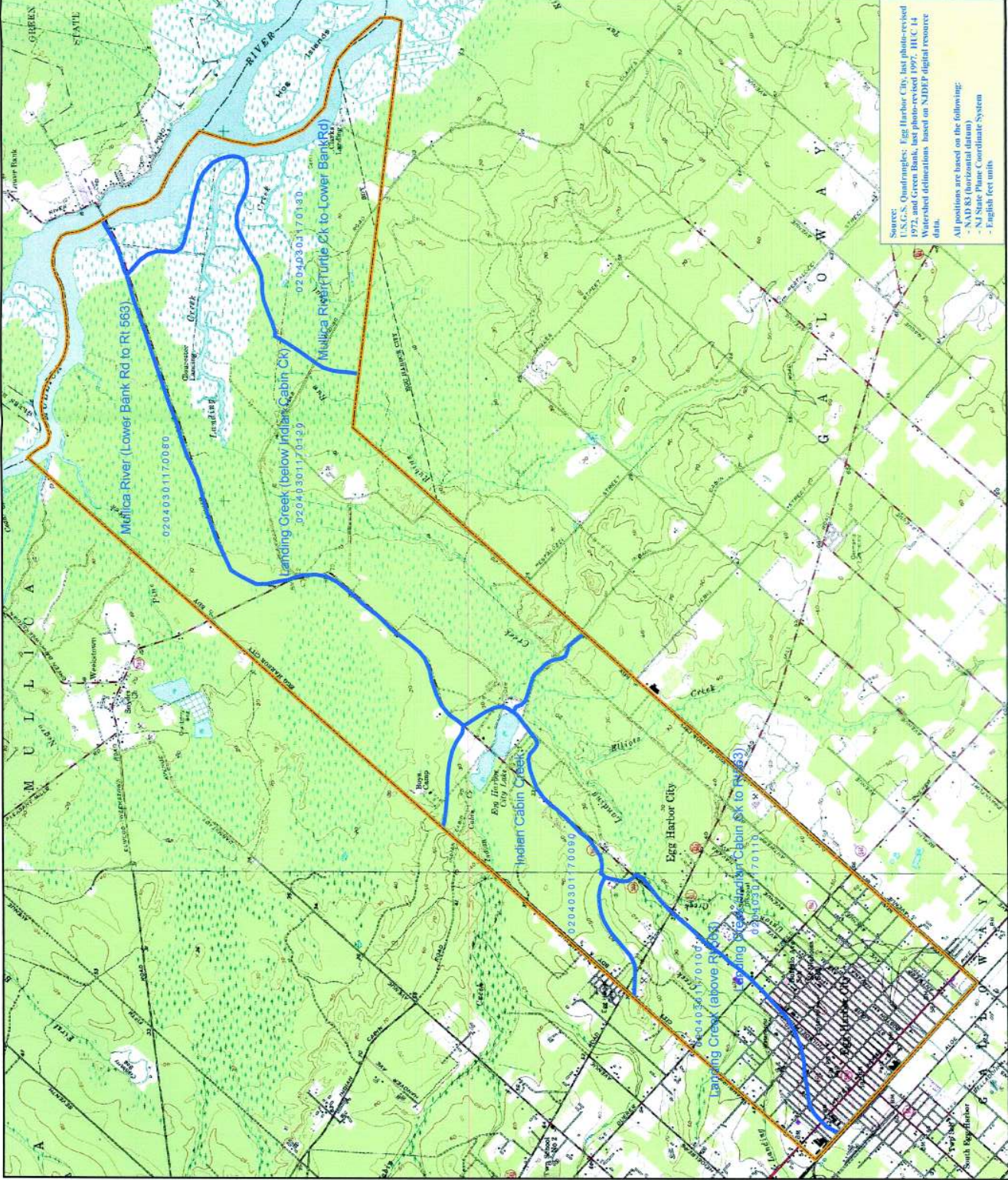


1 inch equals 3,000 feet

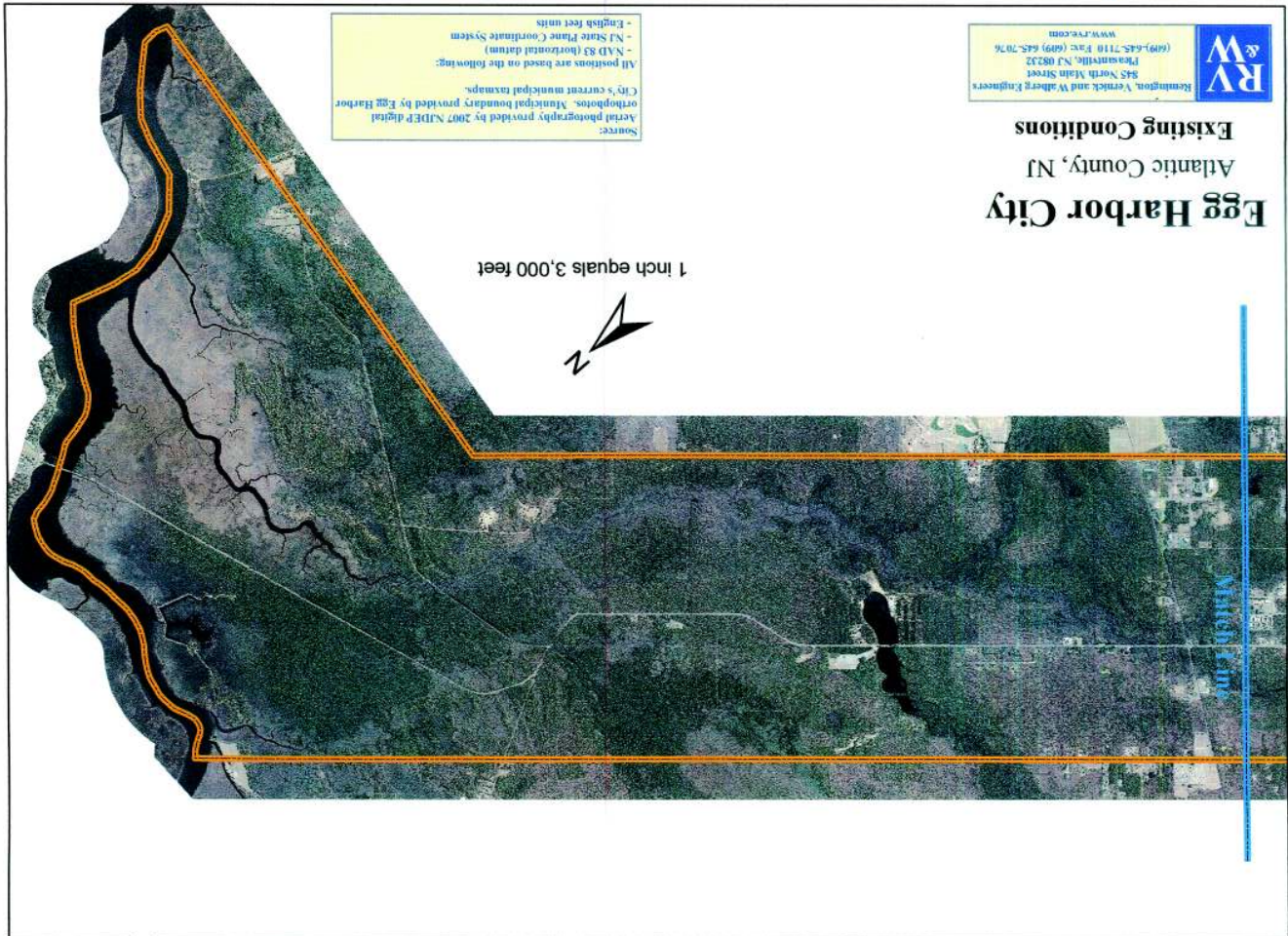
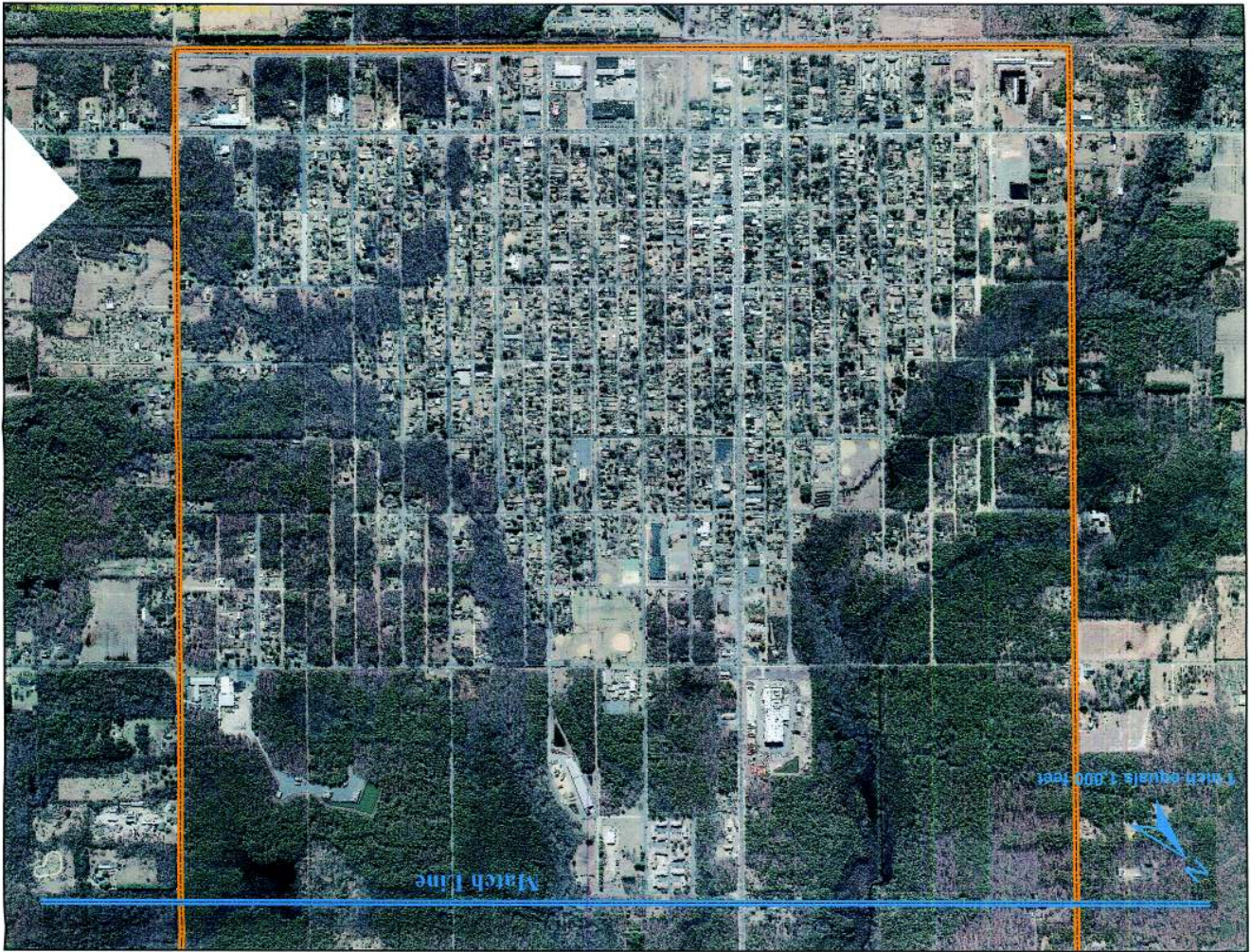


Remington, Verrick, and Waller, Engineers
 845 North Main Street
 Egg Harbor City, NJ 08242
 (609) 445-7110 Fax: (609) 445-7076
www.rv-w.com

T:\Egg Harbor City\Master Plan Map\0717001010.mxd



Source:
 USGS: Quadrangles: Egg Harbor City, last published 1972; and Green Bank, last published 1972.
 Watershed delineations based on NHDPlus digital data.
 All positions are based on the following:
 - NAD 83 (horizontal datum)
 - NJ State Plane Coordinate System
 - English feet units



Sources:
 Aerial photography provided by 2007 NAD83 digital
 orthophotos. Municipal boundary provided by Egg Harbor
 City's current municipal taxmap.
 All positions are based on the following:
 - NAD 83 (horizontal datum)
 - NJ State Plane Coordinate System
 - English feet units

RV & W
 Remington, Verick and Walsh Engineers
 845 North Main Street
 Pleasantville, NJ 08232
 (609) 645-7118 Fax: (609) 645-7076
 www.rvw.com

Egg Harbor City
 Atlantic County, NJ
 Existing Conditions

Egg Harbor City

Atlantic County, NJ

Soils Map

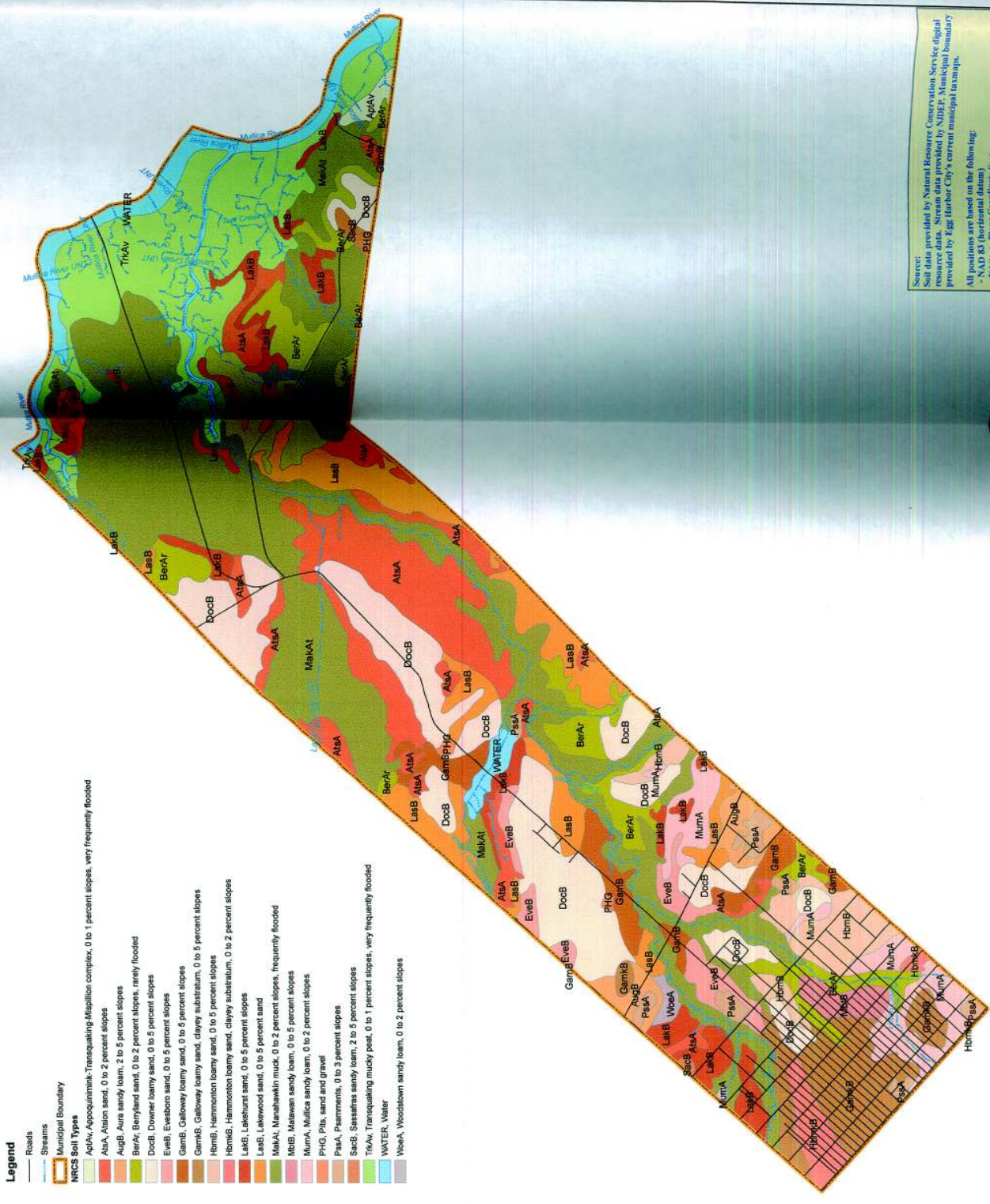


1 inch equals 3,000 feet



RV & W
 Remediation, Verrill and Wilkins
 847 North Main Street
 Hammonton, NJ 08035
 (609) 485-7118
 www.rvw.com

© Egg Harbor City/Master Plan Report/2012/2013/2014



- Legend**
- Roads
 - Streams
 - Municipal Boundary
 - NRCS Soil Types**
 - ApA, Aploquimatic Transquaking Mississippian complex, 0 to 1 percent slopes, very frequently flooded
 - AlsA, Allston sand, 0 to 2 percent slopes
 - AugB, Ault sandy loam, 2 to 5 percent slopes
 - BerA, Barryland sand, 0 to 2 percent slopes, rarely flooded
 - DocB, Downer loamy sand, 0 to 5 percent slopes
 - EveB, Evesboro sand, 0 to 5 percent slopes
 - Gamb, Galloway loamy sand, 0 to 5 percent slopes
 - GambB, Galloway loamy sand, clayey substratum, 0 to 5 percent slopes
 - HmbB, Hammon loamy sand, 0 to 5 percent slopes
 - HmbB, Hammon loamy sand, clayey substratum, 0 to 2 percent slopes
 - LakB, Lakewood sand, 0 to 5 percent slopes
 - LakB, Lakewood sand, 0 to 5 percent sand
 - MakA, Manahawkin muck, 0 to 2 percent slopes, frequently flooded
 - MbB, Matawan sandy loam, 0 to 5 percent slopes
 - MumA, Mullica sandy loam, 0 to 2 percent slopes
 - PHG, Pills, sand and gravel
 - PsaA, Pramonts, 0 to 3 percent slopes
 - SicB, Sisseton sandy loam, 2 to 5 percent slopes
 - TrA, Transquaking mucky peat, 0 to 1 percent slopes, very frequently flooded
 - WATER, Water
 - WoaA, Woodstown sandy loam, 0 to 2 percent slopes

Source:
 Soil data provided by Natural Resource Conservation Service digital resource data. Stream data provided by NJDEP. Municipal boundary provided by Egg Harbor City's current municipal tax maps.
 All positions are based on the following:
 - NAD 83 (horizontal datum)
 - NJ State Plane Coordinate System
 - English feet units

Egg Harbor City

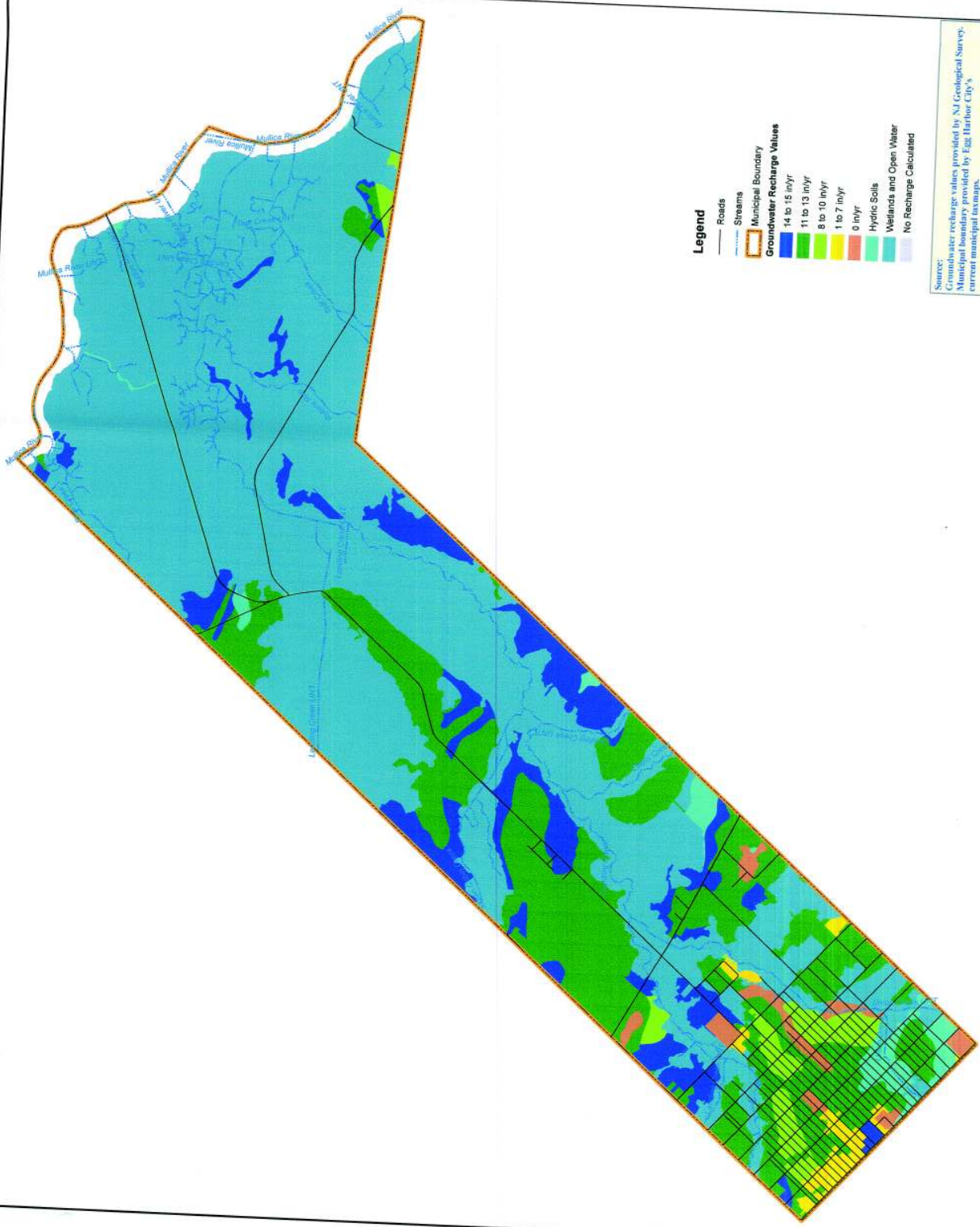
Atlantic County, NJ

Groundwater Recharge



Remington, Verrick, and Walberg Engineers
 845 North Main Street
 Pleasantville, NJ 08232
 (609)-645-7110 Fax: (609)-645-7076
 www.rvw.com

T:\Gis\Egg Harbor City\Water Flow Map\eg017262046.mxd

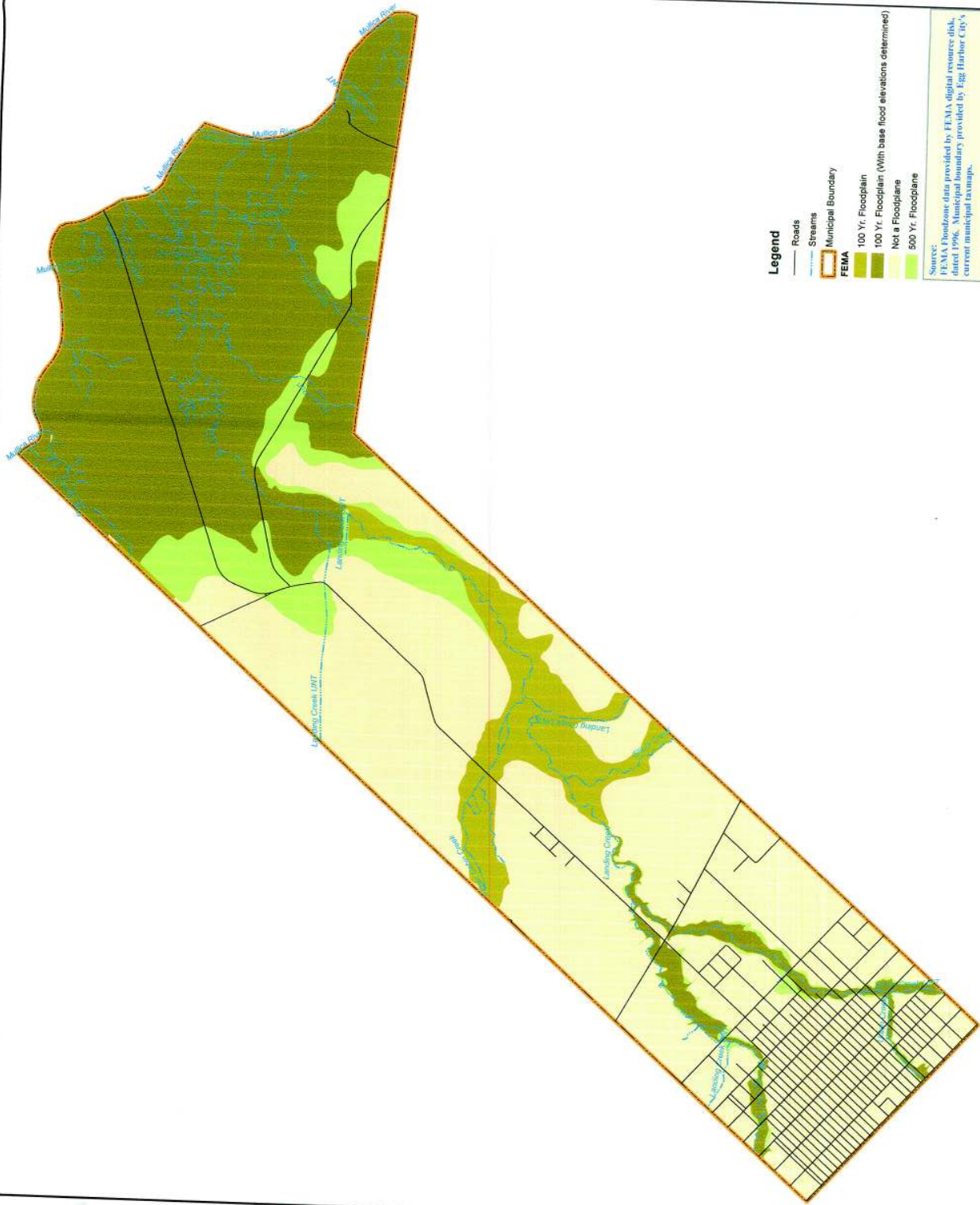


- Legend**
- Roads
 - Streams
 - Municipal Boundary
 - Groundwater Recharge Values**
 - 14 to 15 in/yr
 - 11 to 13 in/yr
 - 8 to 10 in/yr
 - 1 to 7 in/yr
 - 0 in/yr
 - Hydric Soils
 - Wetlands and Open Water
 - No Recharge Calculated

Source:
 Groundwater recharge values provided by NJ Geological Survey.
 Municipal boundary provided by Egg Harbor City's
 current municipal maps.
 All positions are based on the following:
 - NAD 83 Horizontal datum
 - N.J. State Plane Coordinate System
 - English feet units

Egg Harbor City

Atlantic County, NJ
FEMA Floodzones



Legend

- Roads
- Streams
- Municipal Boundary
- FEMA**
- 100 Yr. Floodplain
- 100 Yr. Floodplain (With base flood elevations determined)
- Not a Floodplain
- 500 Yr. Floodplain

Source:
 FEMA Floodzone data provided by FEMA digital resource dbf, dated 1996. Municipal boundary provided by Egg Harbor City's current municipal tax maps.
 All positions are based on the following:
 - NAD 83 (horizontal datum)
 - Coordinate System
 - English feet units



Remington, Verreck and Walshberg Engineers
 845 North Main Street
 Hammonton, NJ 08222
 Phone: (856) 445-7976
 www.rvw.com

T:\08Egg Harbor City\Mapa Plan Mayor\077380\FEM.mxd

Egg Harbor City

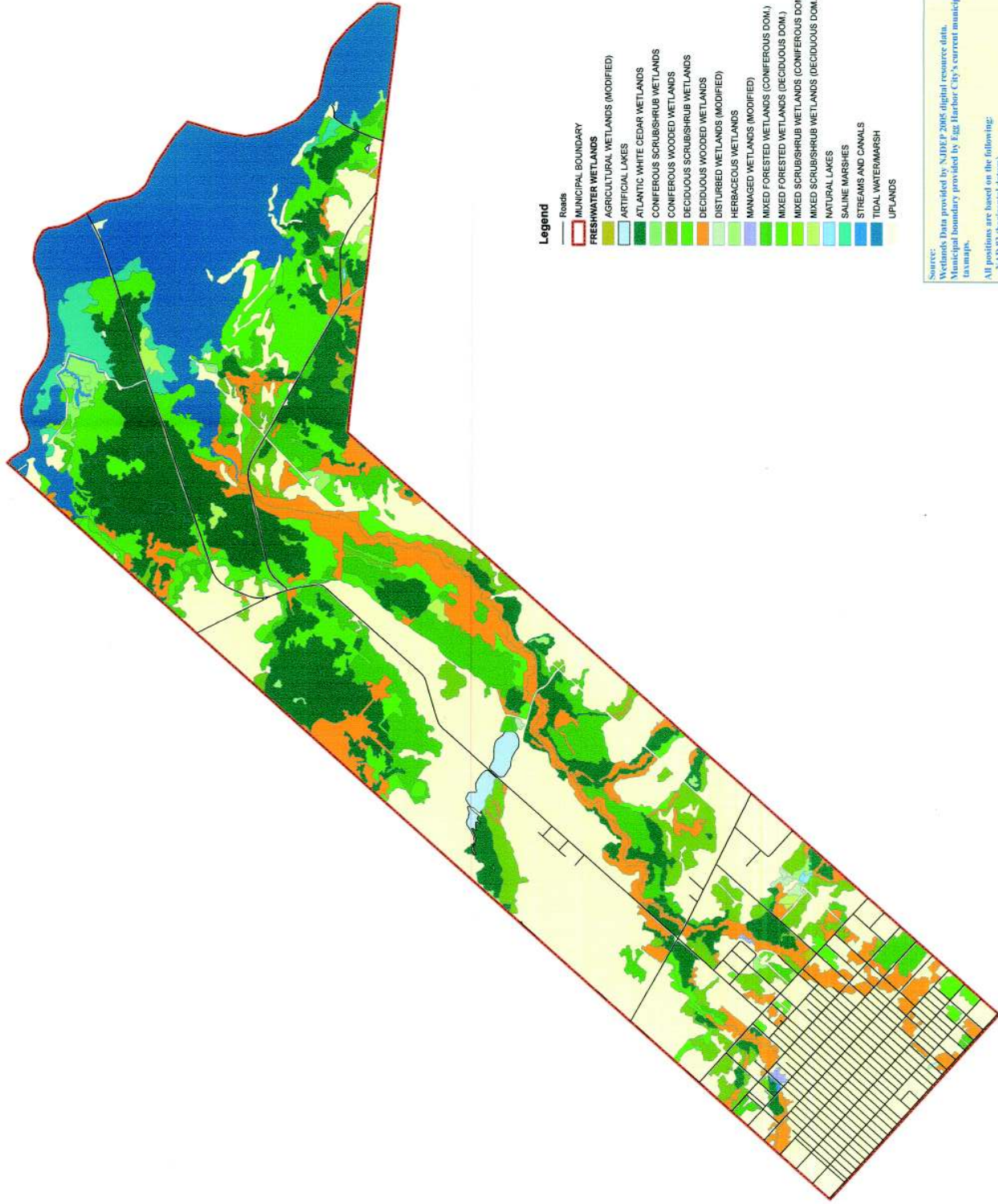
Atlantic County, NJ

Freshwater Wetlands



Robert W. Verick and Walter Engineers
 145
 Pleasantville, NJ 08212
 (609) 645-7110 Fax: (609) 645-7076
 www.rvw.com

T:\0459-Egg Harbor City\Water Plan Map\04590171300\Wetlands.mxd



- Legend**
- Roads
 - MUNICIPAL BOUNDARY
 - FRESHWATER WETLANDS
 - AGRICULTURAL WETLANDS (MODIFIED)
 - ARTIFICIAL LAKES
 - ATLANTIC WHITE CEDAR WETLANDS
 - CONIFEROUS SCRUBSHRUB WETLANDS
 - CONIFEROUS WOODED WETLANDS
 - DECIDUOUS SCRUBSHRUB WETLANDS
 - DECIDUOUS WOODED WETLANDS
 - DISTURBED WETLANDS (MODIFIED)
 - HERBACEOUS WETLANDS
 - MANAGED WETLANDS (MODIFIED)
 - MIXED FORESTED WETLANDS (CONIFEROUS DOM.)
 - MIXED FORESTED WETLANDS (DECIDUOUS DOM.)
 - MIXED SCRUBSHRUB WETLANDS (CONIFEROUS DOM.)
 - MIXED SCRUBSHRUB WETLANDS (DECIDUOUS DOM.)
 - NATURAL LAKES
 - SALINE MARSHES
 - STREAMS AND CANALS
 - TIDAL WATERMARSH
 - UPLANDS

Source:
 Wetlands Data provided by NJDEP 2006 digital resource data.
 Municipal boundary provided by Egg Harbor City's current municipal tax maps.

All positions are based on the following:
 - NAD 83 (horizontal datum)
 - N.J. State Plane C coordinate System
 - English feet units

Egg Harbor City

Atlantic County, NJ

Vegetation Map



1 inch equals 3,000 feet

0 1,500 3,000 6,000 Feet

RW & W

Remington, Vermaak and Nijberg Engineers
 845 New York Street
 Pleasantville, NJ 08232
 (609) 445-7110 Fax: (609) 445-7076
 www.rvw.com

T:\0659 - Meter City\Map\Map107360\Vegetation.mxd

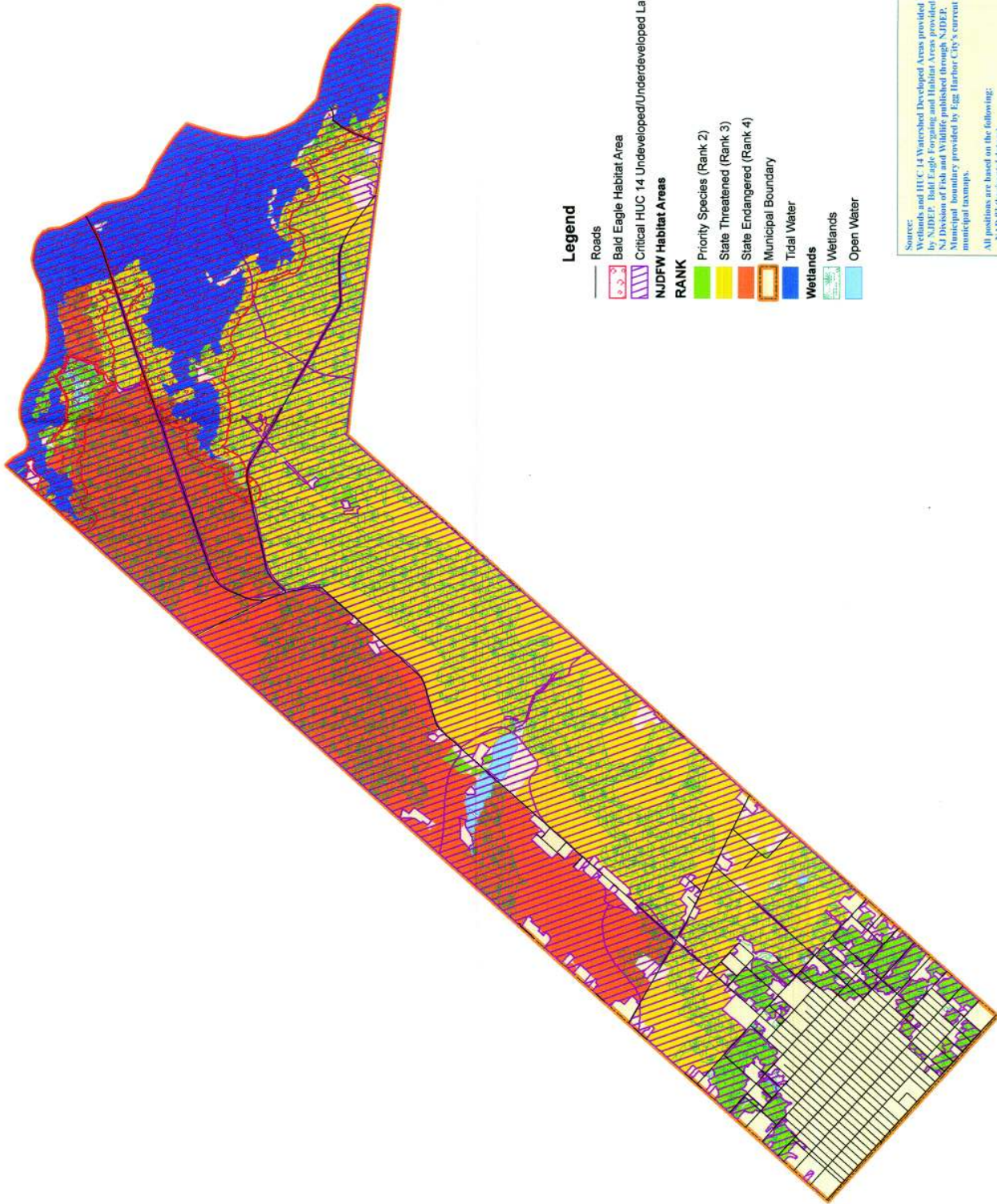


Source:
 Vegetation Data provided by NJDEP 2005 Land Use and Cover
 digital resource data. Municipal boundary provided by Egg Harbor
 City's current municipal taxmaps.
 All positions are based on the following:
 - NAD 83 (horizontal datum)
 - NJ State Plane Coordinate System
 - English feet units

Egg Harbor City

Atlantic County, NJ

Development Constraints



Legend

- Roads
- Bald Eagle Habitat Area
- Critical HUC 14 Undeveloped/Underdeveloped Land
- NJDFW Habitat Areas
- RANK**
- Priority Species (Rank 2)
- State Threatened (Rank 3)
- State Endangered (Rank 4)
- Municipal Boundary
- Tidal Water
- Wetlands
- Open Water

1 inch equals 3,000 feet
0 1,500 3,000 6,000 Feet

Remington, Verick and Walberg Engineers
145 North Main Street
P.O. Box 100
Egg Harbor City, NJ 08223
(609) 645-7110 Fax: (609) 645-7076
www.rvw.com

T:\Egg Harbor City\Master Plan_Maps\071300Dev_Constraints.mxd

Source:
Wetlands and HUC 14 Watershed Developed Areas provided by NJDEP. Bald Eagle Foraging and Habitat Areas provided by NJDEP. Fish and Wildlife published through NJDEP. Municipal Boundary provided by Egg Harbor City's current municipal taxmaps.
All positions are based on the following:
- NAD 83 (horizontal datum)
- NJ State Plane Coordinate System
- English feet units